

241 Deansgate, Manchester, Lancashire, M3 4EL
Tel: 0161 637 8336
Email: contactus@ascendproperties.com
www.ascendproperties.com

Ascend

Built on higher standards



Shot Tower Close, Chester

Asking Price £250,000

Welcome to your brand-new 2-bedroom apartment at Chester's most exciting address, The Shot Tower. Standing at 40 metres tall with years of industrial history in its trademark red brick, this epic development is the tallest structure in Chester and the oldest of the UK's 3 remaining shot towers.

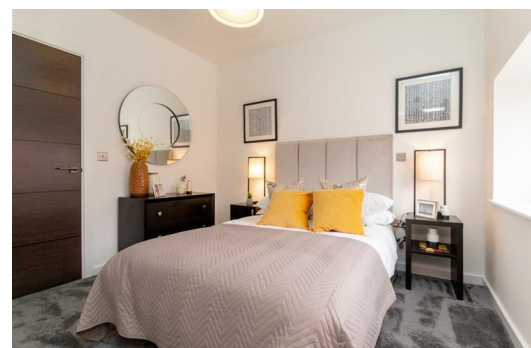
Standing by the Shropshire Union Canal, 6 minutes from the station and only a 10-minute walk from the city centre, The Shot Tower is positioned in a prosperous area that has benefited from major redevelopment in recent years.

The site itself comprises 2 buildings, plotted each side of the tower, as well as a restored Engine House & Whitechapel building that now forms 3 state-of-the-art townhouses and duplex apartments: truly one of a kind.

Designed by award winning architects DLA Design, this iconic residence comprises of a mixture of one-bed & two-bed apartments, two-bed, three-bed & four-bed duplexes and four-bed townhouses. Some of the homes are complete with private balconies and personalised amenity spaces.

Super spacious, the layout offers large open plan living, a sizeable bathroom and en-suite, two double bedrooms and storage in the hall. Designer brands are not shy in the specification; there's Bosch integrated kitchen appliances and Villeroy & Boch ceramics in the bathrooms. The living area is an open space enhanced with natural daylight, while the bedrooms are cosy hideaways that have plush grey carpeting and LED downlights.

Images for marketing purposes, some fixtures and fittings may vary





Energy Efficiency Rating				Environmental Impact (CO ₂) Rating			
Rating	Score	Band	Score	Rating	Score	Band	Score
A	92-100	A	100	A	100	A	100
B	81-91	B	90	B	80	B	80
C	69-80	C	70	C	60	C	60
D	50-68	D	50	D	40	D	40
E	39-49	E	30	E	20	E	20
F	29-38	F	20	F	10	F	10
G	1-28	G	10	G	0	G	0

England & Wales